

Installation Instructions for *Super Cash It*

System Requirements

Pentium III 500 MHz or faster

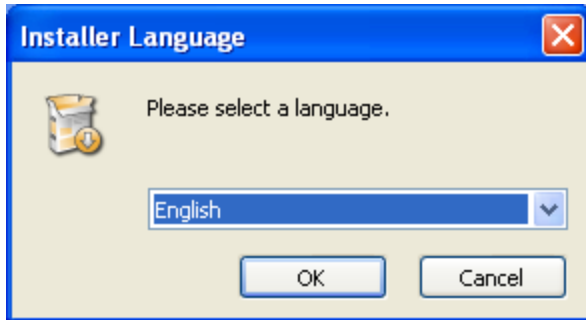
256 MB RAM

Windows 2000 SP4, Windows XP SP2

QuickTime (Download without iTunes at

<http://www.apple.com/quicktime/download/standalone.html>)

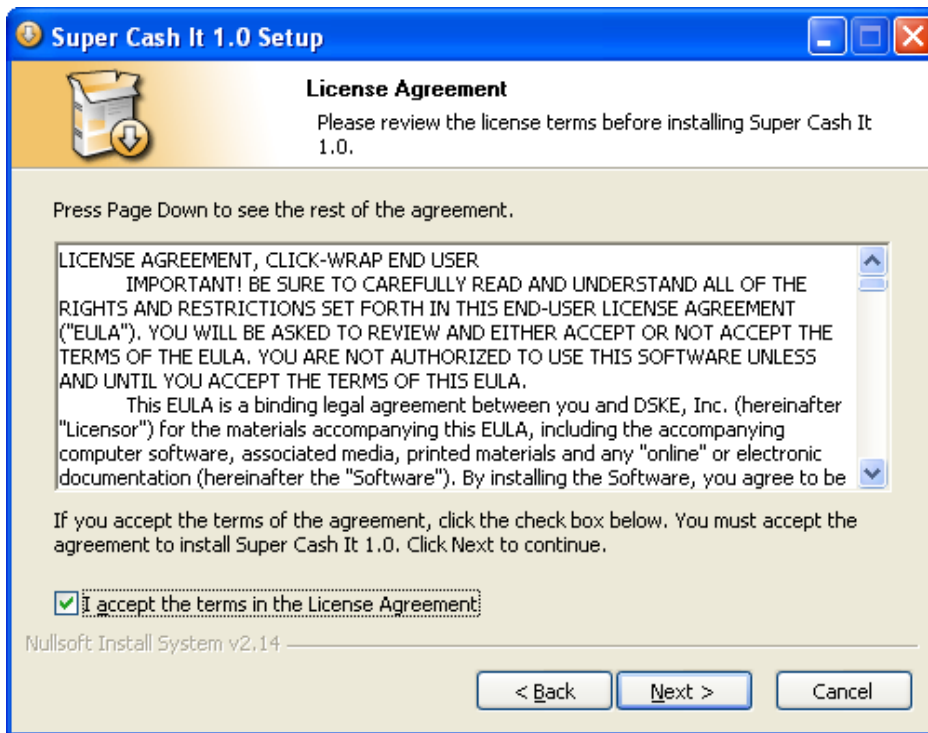
- 1) Locate the installer file and double click on the icon to start the installer.
- 2) Choose your installer language (English or Spanish) and click on “OK”.



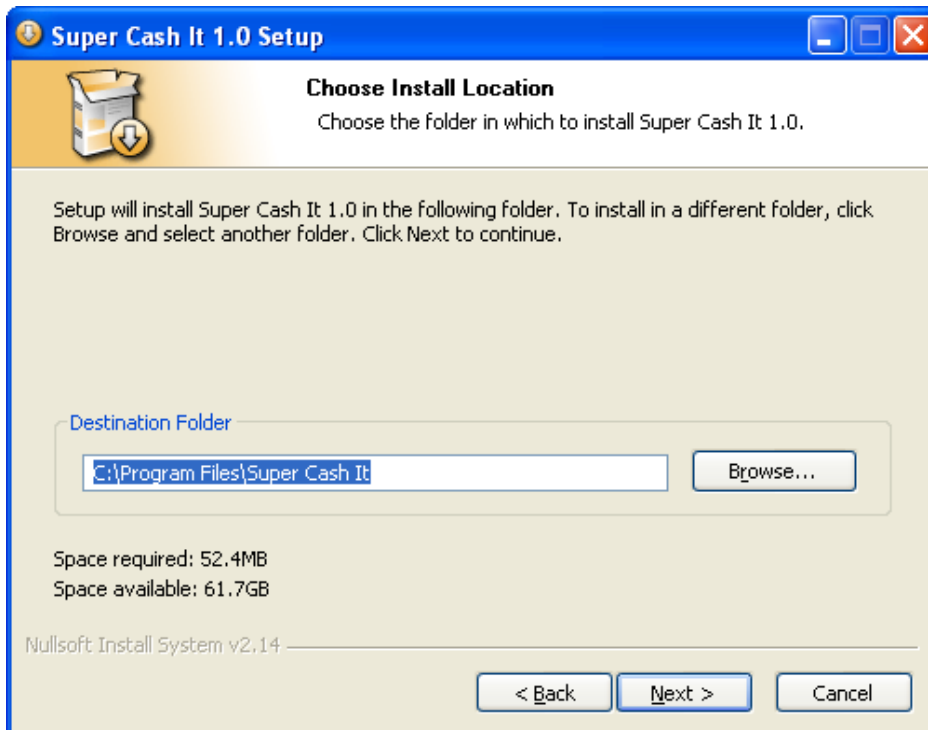
- 3) Click “Next” to continue.



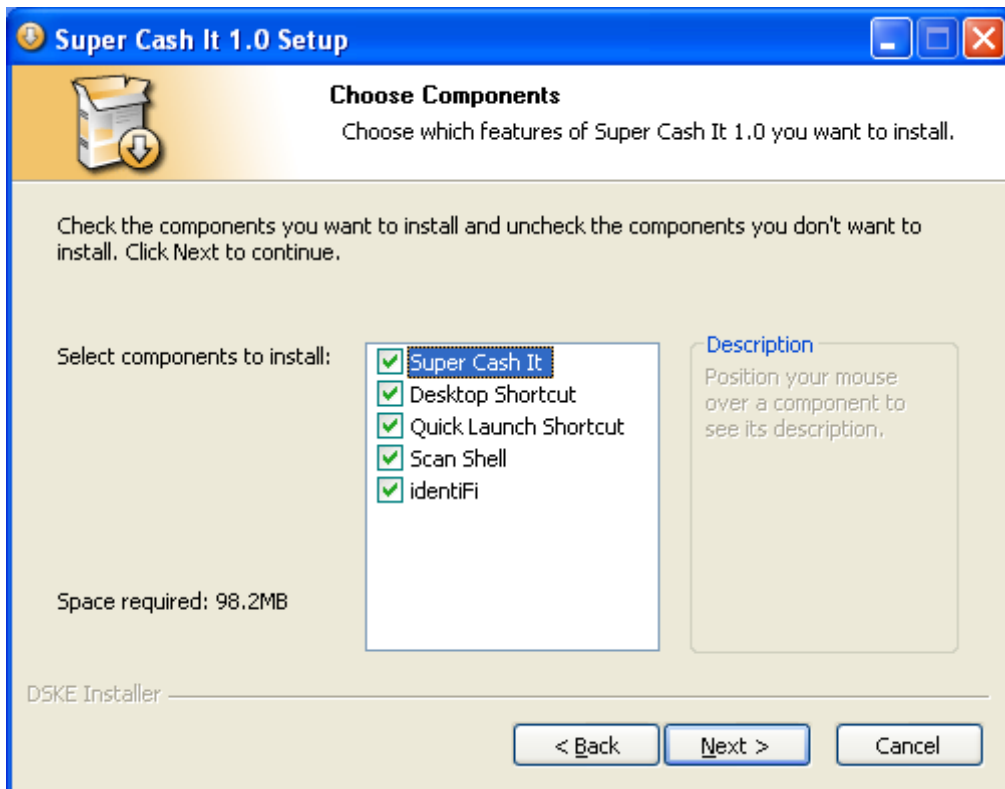
- 4) Review the license agreement and click on the checkbox for “I accept the terms in the License Agreement” if you agree to the terms of the license. Click on “Next” to continue.



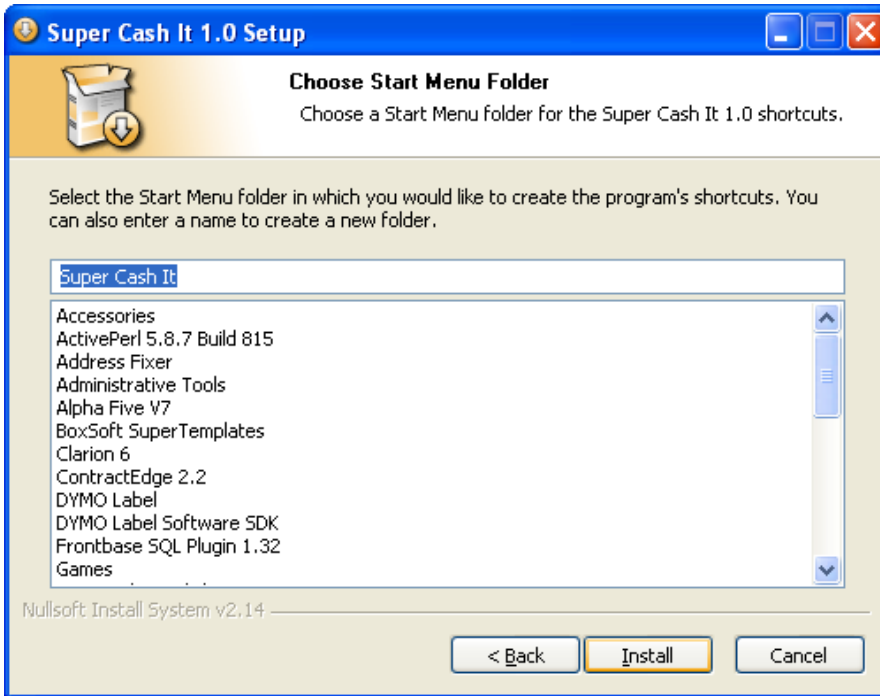
- 5) Choose the location to install *Super Cash It* and click on “Next” to continue.



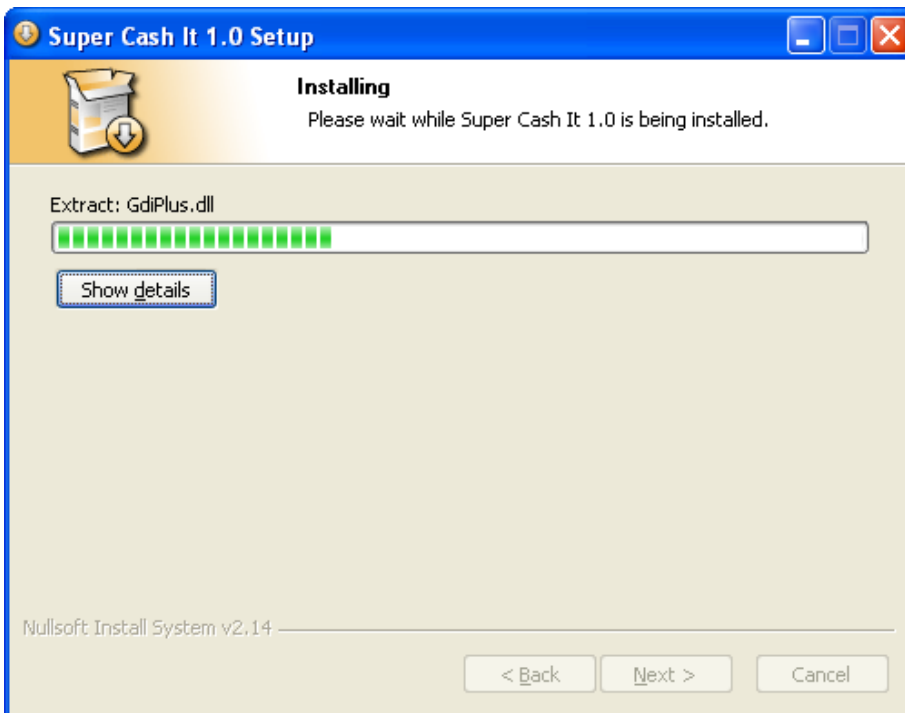
6) Select the components of *Super Cash It* that you want to install. *Super Cash It* is the main application file and is required. Checking the desktop shortcut option will install a shortcut to *Super Cash It* on your desktop. Checking the quick launch shortcut will place a shortcut to *Super Cash It* in your quick launch toolbar. If you are planning on using the Scan Shell scanner for imaging and OCR of licenses and/or checks you should leave the Scan Shell check box checked. The identiFi option should be checked if you will be using the biometrics feature of *Super Cash It*. Make your selections and click on “Next” to continue.



7) Select the name of the Start Menu folder for *Super Cash It* and click on “Install” to begin the installation process.

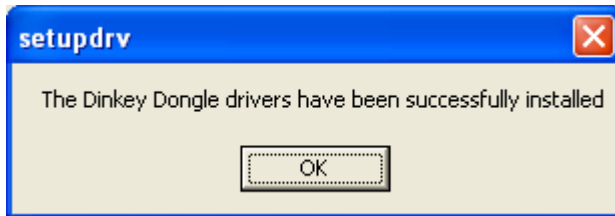


8) The install process will begin and you will see a progress bar.



9) If you selected to install Scan Shell and/or identiFi the setup process will begin. Follow the directions for each installer and click on the “Finish” button to continue installing *Super Cash It*.

10) A dialog similar to that shown below will appear. This notifies you that the drivers needed to use the dongle have been installed. Click “OK” to continue.



11) Once the install process has been completed, you will be prompted to restart your computer. Choose either “Reboot now” or “I want to manually reboot later”. Do not run *Super Cash It* before you reboot your computer.



Congratulations, the install process has been completed and you are ready to begin using *Super Cash It*.

The *Super Cash It* installer was written using the [Nullsoft Scriptable Install System](#).